

# Custom Made Marine Carpet

For Indoor & Outdoor on your Boat



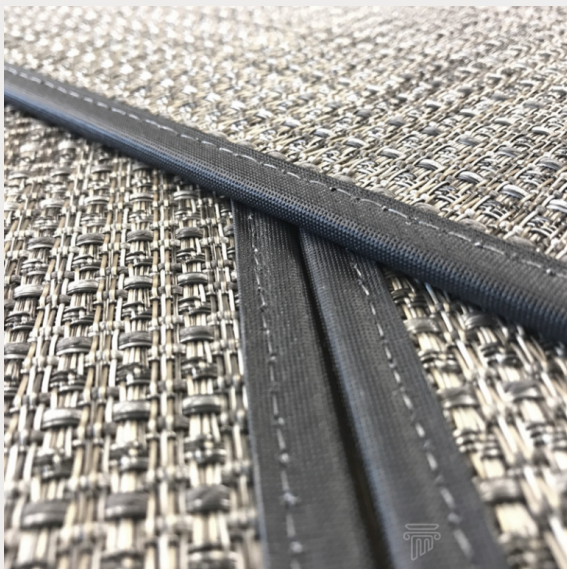
2023

**MCCRANN CYRUS** MFG

MCCRANNCYRUS.COM

# TABLE OF CONTENT

<b>The Marine Carpet Process</b>	<b>04</b>
<b>Exterior Marine Carpet</b>	<b>06</b>
<b>Exterior Woven Vinyl</b>	<b>07</b>
<b>Edge Finishing &amp; Installation</b>	<b>08</b>
<b>Cleaning Exterior Marine Carpet</b>	<b>09</b>
<b>UltraDeck</b>	<b>10</b>
<b>Interior Carpet</b>	<b>12</b>
<b>About Us</b>	<b>13</b>
<b>How to Order</b>	<b>14</b>



# Welcome to the

# **MCCRANN CYRUS MFG**

# Marine Catalog



McCCrann Cyrus has focused on innovation for over 45 years to ensure the safest, quality products that create warm and welcoming spaces in any area.

Not only do we manufacture incredible Marine Carpeting, but we provide a wide variety of services as well. These include cutting and edge finishing carpets to create area rugs. Supplying high quality area rug underlay. Creating custom indoor and outdoor commercial matting and more.

We continue to be proud of our achievements as we have numerous products in many cities across North America. Our desire is to supply the best products for your needs.

# The Marine Carpet Process

We supply custom, premium quality carpet for indoor and outdoor applications on your boat. Here are the steps to enhance the look of your boat with new flooring.

## CONSULTATION

Schedule a free consultation with our boat specialist.

Let us guide you through the process from start to finish.

We can help you choose the best products to suit your needs and space.

A preliminary measure will be done so we can provide you with a free proposal.



## ON-SITE MEASURES

All of our marine carpets are made to your boats exact specifications.

Our experienced technicians measure each space to make sure each carpet fits properly and looks great.

This includes working with hatches, stairs or any other unique space on your vessel.

*Tailor made to your boat.*



## EXPLORE DESIGNS

Add a custom, one of a kind design that compliments your boat.

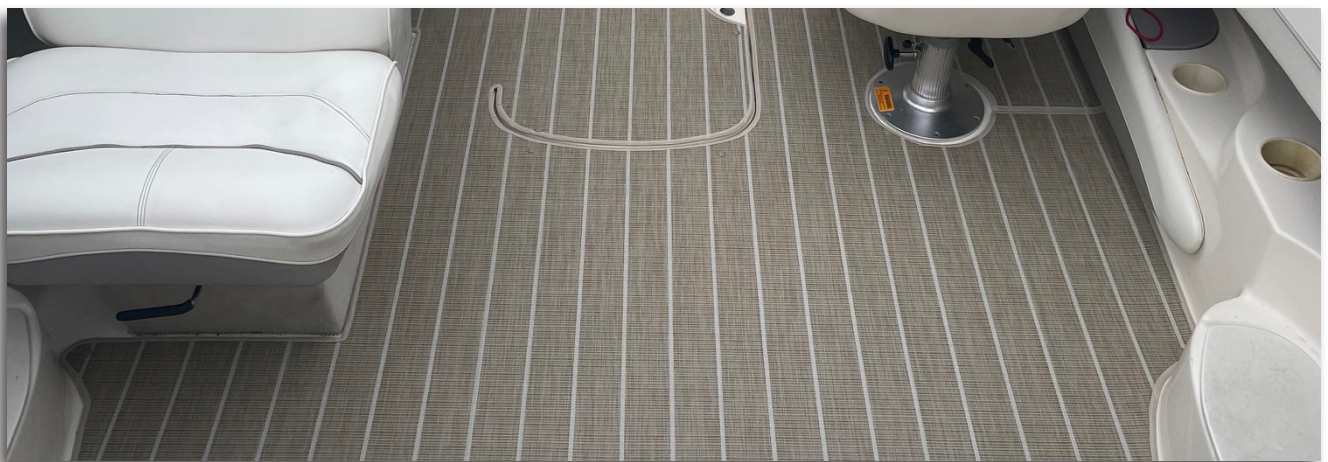
We offer a vast portfolio of nautical, traditional, modern and contemporary designs for you to choose from. You can also create your own design with help from our custom area rug specialists.

Our durable interior and exterior marine products offer a wide range of colors for your designs.



Our State of the art technology allows us to be a world apart, by incorporating logos and designs with unparalleled detail and clarity.

We CNC cut and heat weld your logo right into your custom designed carpet. Our vast pallet of color options ensures the integrity of your logo is captured.



## SNAP IN, DELIVERY, INSTALLATION

Let us look after your carpets from start to finish. We offer delivery and installation including snaps or wall to wall glue downs.

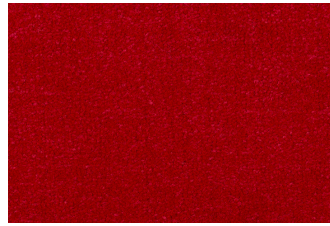
# Exterior Marine Carpet

## CARPET

Our marine grade carpets are made from 100% polypropylene carpet that is mold, mildew and UV resistant with an Aqualoc non-slip backing that will not stretch, rub off or harm your boat deck. Glue down backing is also available.



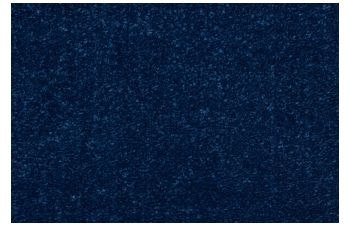
PREMIUM CUT PILE  
COLOR R4908 SANTANA



PREMIUM CUT PILE  
COLOR RIVIERA RED



PREMIUM CUT PILE  
COLOR SOFT GREY



PREMIUM CUT PILE  
COLOR MARINER BLUE



PREMIUM CUT PILE  
COLOR IRIS



PREMIUM CUT PILE  
COLOR CHARCOAL



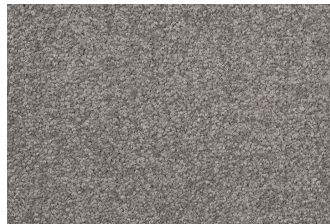
CUT LOOP  
COLOR MICA MIST



CUT LOOP  
COLOR TIFFANY



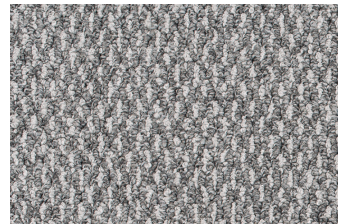
DELUXE CUT PILE  
COLOR SUEDE



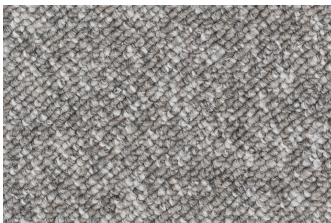
DELUXE CUT PILE  
COLOR STERLING



SPECIALTY BERBER  
COLOR DESERT SAND



SPECIALTY BERBER  
COLOR SILVER MIST



STANDARD BERBER  
COLOR THUNDER GREY



STANDARD BERBER  
COLOR MOONSHINE

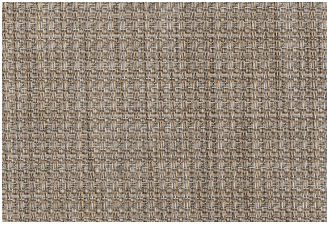


## AQUALOC BACKING

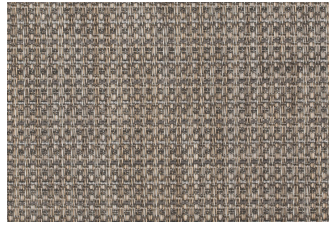
This PVC vinyl backing is famous for being the best backing in the marketplace; it will not melt to the deck, crumble, or degrade even in the harshest marine environments, yet maintains the soft cushioned feel underfoot.

## AQUAWEAVE WOVEN VINYL

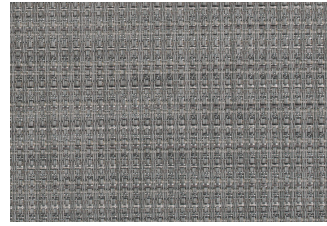
A true revolution in marine flooring, our AquaWeave™ boat flooring is a combination of the best vinyl and marine carpet yarns, woven together to add depth and elegance. At 8.5' wide, it's wide enough to accommodate any need and perfect for drop-in or snap-in style boat mats. Custom sizes available.



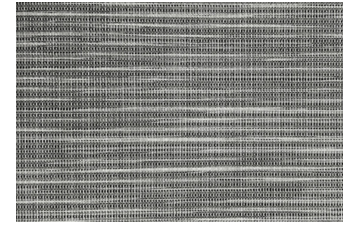
HYDRAFELT OR AQUALOC  
COLOR FLAX



HYDRAFELT OR AQUALOC  
COLOR BLACK PEARL



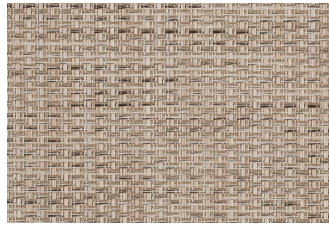
HYDRAFELT OR AQUALOC  
COLOR CARBONITE



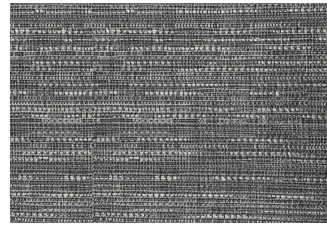
HYDRAFELT OR AQUALOC  
COLOR THATCH QUARTZ



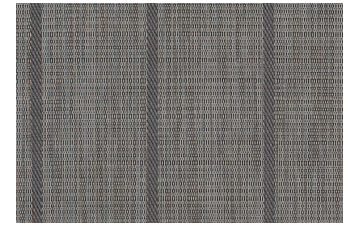
HYDRAFELT OR AQUALOC  
COLOR THATCH SAFARI



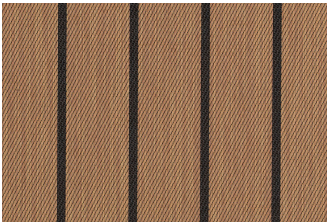
HYDRAFELT OR AQUALOC  
COLOR SOLAR TAN



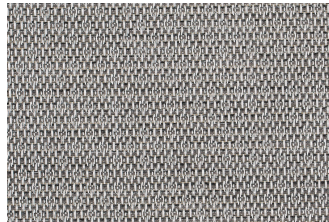
HYDRAFELT OR AQUALOC  
COLOR DK GREY FUSION



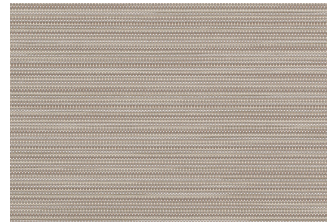
HYDRAFELT OR AQUALOC  
COLOR TEAK II SLATE



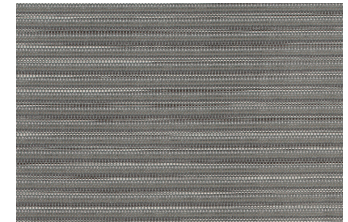
HYDRAFELT OR AQUALOC  
COLOR BLACK TEAK



HYDRAFELT ONLY  
COLOR NAPA SILVER



HYDRAFELT ONLY  
COLOR SOLSTICE SANDBAR



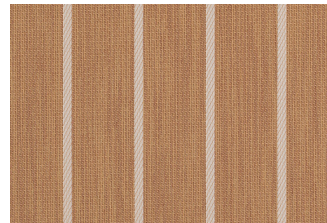
HYDRAFELT ONLY  
COLOR SOLSTICE GRANITE



HYDRAFELT ONLY  
COLOR RIPETIDE DUNES



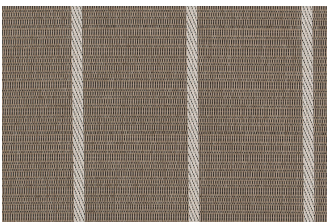
HYDRAFELT ONLY  
COLOR RIPETIDE SHADOW



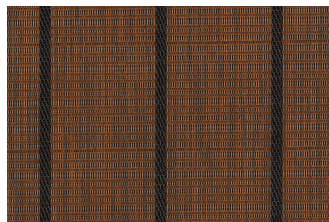
HYDRAFELT ONLY  
COLOR NATURAL TEAK



HYDRAFELT ONLY  
COLOR TEAK II CARAMEL



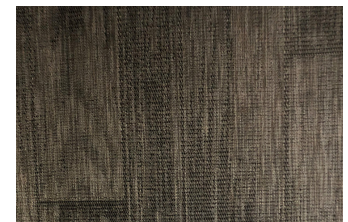
HYDRAFELT ONLY  
COLOR TEAK II NUTMEG



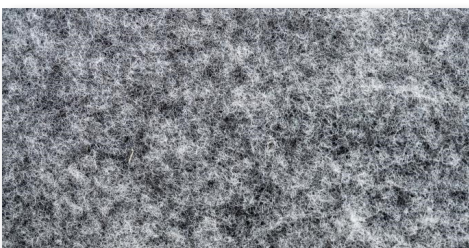
HYDRAFELT ONLY  
COLOR TEAK II WALNUT



HYDRAFELT ONLY  
COLOR TEAK II COCONUT



HYDRAFELT ONLY  
COLOR LAKEPORT SHADOW



### HYDROFELT BACKING

The HydroFelt backing ensures that it won't melt to the deck, degrade, or crumble like other marine backings, yet maintains the soft cushioned feel underfoot.

# Edging & Installation



## EDGE FINISHING: STANDARD BINDING

- Edged using scotch guarded polypropylene binding tape.
- Available in over 150 colors to match any carpet color and style.
- Very durable.

## SNAP-IN INSTALLATION SYSTEM

With standard snap installation, you'll be able to connect your new mats to your boat's existing studs. Installation is quick and easier than you think. We can help make it a pain-free experience with our loaner snap tool applicator or we can do the installation for you. Snaps are stainless steel 1/4" studs made for the marine industry. Snaps will always arrive loose and must be applied at the boat in order to line up with existing studs.



## GLUE DOWN

If your current marine flooring is not easily removed and is adhered to the boat floor, then you will require glue down flooring. Our glue down marine flooring products can be seen in the best pontoons, ski and wake boats, fishing boats, and cruiser salons, along with some unexpected places, like RVs.



# Cleaning Exterior Marine Carpet

Corinthian Marine carpeting and flooring is easy to maintain. It requires occasional hosing off and vacuuming. When necessary, use a non-solvent based, high-quality carpet cleaner to remove stubborn stains, always being careful to remove all cleaner residues with water. It's also best to avoid pressure hoses and harsh bristle brushes (even nylon, if its too stiff - soft bristles only)



## CLEANING TIPS

**TIP #1:** Using plain vinegar mixed with water is a classic cleaning trick. Mix around 40 oz of white vinegar to 1 gallon of water. Spray or pour onto the area you wish to clean and let soak until the carpet is fully saturated. Use a medium bristle brush and scrub gently. Be sure to thoroughly rinse after cleaning.

**TIP #2:** Use a multi-purpose cleaner to spot clean a specific area. You can even use degreaser for those stubborn stains caused by grease or oil so long as it does not have any harsh solvents. Make sure to pre-soak and rinse the carpet for best results.

**TIP #3:** To remove difficult stains such as fish blood, you can use cold water and mild dish soap. Apply to the affected area and let soak. Avoid hot water (this can make the stain permanent). Blot with a towel or sponge; You can follow up with a soft-medium bristle brush and scrub after first or second soak. Rinse the area completely and repeat.

**TIP #4:** Baking soda can be a huge help to remove odors such as wet dog or that fishy seawater smell. It can also assist in removing some stains. Lightly mist the carpet first, then sprinkle a generous amount of baking soda over it. The longer you let it sit, the more absorbent it will be (3 hours minimum- can be left overnight). Return after allowing the baking soda to work and vacuum it up.



## DO:

1. Regularly vacuum and hose off your Aquamat® to prevent staining.
2. If there's a spill, clean it up asap!
3. Dry your Aquamat® face up or by hanging.
4. Allow your Aquamat® to dry completely before storing; roll and store with carpet facing out.

## DO NOT:

1. Do not fold your Aquamat®.
2. Do not roll/store your Aquamat® while wet.

# UltraDeck

## WHY ULTRADECK

- UltraDeck is closed cell and chemically cross linked for a more durable product.
- It has the highest UV resistance, tested to triple the best marine upholstery vinyl with no color change.
- 26% lighter weight.
- 32% higher heat resistance.
- Excellent insulator.
- An exceptional line of synthetic marine decking.
- Durability.
- Zero water absorption.
- High UV resistance, with zero colour change.



## WHAT IS ULTRADECK?

UltraDeck® is a unique premium blend of closed cell, high quality PE foam produced for the harsh marine environment. It has very high UV resistance, it's UV tested to over triple the best marine upholstery vinyl with no fade. Being that it is closed cell, it does not absorb, so it will never smell and is stain resistant and cleans up very easy. It provides an excellent shock absorbent, sounds deadening, non-slip, customizable surface for any vessel. The product is backed with the thickest, highest grade acrylic-based 3M pressure sensitive adhesive providing a simple yet durable installation.



## PRODUCT WARRANTY

UltraDeck® itself carries a 5 year warranty from premature product break down. This excludes physical abuse, solvent/oil/fuel damage and staining. As well as incorrect installation resulting in adhesive issues.



*Quality you can count on.*



## IS IT CUSTOMIZABLE?

Absolutely, we can produce the package with whatever design/ logo's you would like with added design costs OR pick from our stocked patterns (left) as well.

All of our packages are client pre-approved with a proof of the kit so we can be 110% sure it is exactly what you have in mind.



## HOW DO YOU CLEAN ULTRADECK?

We recommend Simple Green HD and a medium stiff deck brush ( both available at home depot) to clean the product. Mist cleaner on, let soak, brush with a medium/firm brush with the grain, rinse. Do not use a pressure washer in close contact, acid based cleaners or solvents with UltraDeck® as it will damage the product.



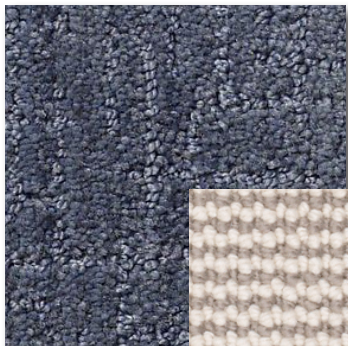
# Interior Carpet

Choose from a variety of styles and colors. Here's a look at the most popular options.

## FEATURES

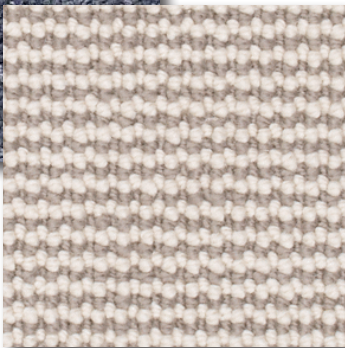
Indoor carpets can be made from a wide variety of premium nylon and wool in an extensive selection of styles and colors.

The carpet shown here is called Distinct Flair. It features a beautiful wave like pattern.



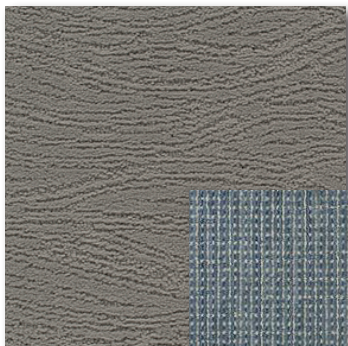
## DEL SUR

Color Coastal Surf



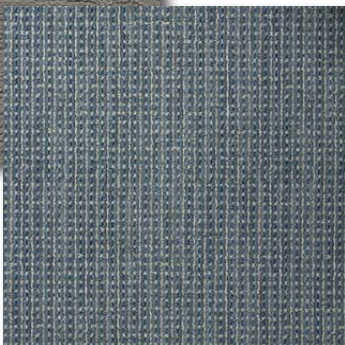
## KINGSTON HILL

Color Hastings



## UNTAMED CHIC

Color Aspen Summit



## ST. LUCIA

Color: Lakeshore



## TEXTURE

Add texture to your space with a pattern like the pictured (Left) Kingston Hill, (Right) Untamed Chic carpet lines.

All of the carpets shown here are available in multiple color ways to suit your style and interior design.

You can also add a custom design like an accent border or your boats name for a unique look.



## WARM, WELCOMING SPACES

Add maximum comfort to your interior cabin with warm carpets underfoot. Created with a custom fit, these interior carpets will enhance the look and feel of all spaces, big or small.



# ABOUT US

# CUSTOM MA

McCCrann Cyrus Mfg has been a family business for three generations since it's start in 1977. The company was founded by Fred McCrann and is now owned and operated by his eldest son, Greg McCrann.

Since it's start McCrann's has been constantly growing and developing a reputation for our attention to quality and detail. We continue to grow and service clients across Canada and the USA.

With McCrann Cyrus Mfg you get the professionalism and knowledge of generations of highly committed managers and employees.

We are proud to be a family firm with a coast to coast presence.



## PREMIUM QUALITY

We offer a wide variety of high quality products from interior wool to exterior woven vinyl.



## RECYCLED

Many of our products are currently manufactured with various levels of recycled content taken from both post industrial as well as post consumer recycled material



## START TO FINISH

Our professionals make the process easy from beginning to end with on site visits, delivery and installation.

# MADE

We are continually looking for new and innovative products. Our goal is to reduce our overall impact on the environment by incorporating as many green initiatives as possible. Many of our products are currently manufactured with various levels of recycled content taken from both post industrial as well as post consumer recycled material and our manufacturing facility embraces all environmentally friendly protocols and recycling programs. We also work diligently with the carpet manufacturers to utilize their recycle programs.



## HOW TO ORDER

---

Schedule a **FREE** consultation with your sales representative:

Grant Phoenix Hawkins - C: 604-619-7771 | E: [grant@mccrannycyrus.com](mailto:grant@mccrannycyrus.com)



### ON SITE VISIT

---

We provide an on-site measure service as well as a product consultation to help find a product that will work for your boat.



### PROPOSAL

---

Once we have the sizes and material selection we can provide a proposal and rendering for any custom added designs so you can have all the details before committing to an order.



### FAST DELIVERY

---

Once the order is approved you can expect your new carpets in approximately 4-5 weeks.



# Let's work together.

CONTACT OUR MARINE  
CARPET SPECIALIST

GRANT PHOENIX HAWKINS

- C: 604-619-7771
- O: 604-298-2522
- E: Grant@mccranns.com

## We Design & Manufacture

COMMERCIAL ENTRY CARPETING • CUSTOM AREA RUGS • MARINE CARPET  
CARPET EDGE FINISHING SOLUTIONS • AREA RUG UNDERLAY  
ANTI-FATIGUE MATTING • BRANDED MATS • RECESSED WELL MATTING

**MCCRANN CYRUS** MFG

1290 BOUNDARY ROAD, BURNABY BC, V5K 4T6

[mccranncyrus.com](http://mccranncyrus.com)